



PRODUCTS
**STYLES &
SELECTIONS**

10MM FRAMELESS SHOWER SCREENS

10mm Shower Screens: Style Types

10MM HINGED

10MM FIX & SWING

- Fix & Swing Shower Screens swing one way only. Default is back into the bath.
- The swing panels swings 180°

10MM PIVOT

10MM DESIGNER FRAMED +EXTRA \$/M²

Frame Colours

- Black
- White
- Silver

10MM SLIDING: SYTEMS

HYDRO (round, internal rollers) +\$450

- Polished Chrome
- Matt Silver

OPTO (square, exposed rollers) +\$450

STANDARD

- Polished Silver
- Matt Silver/Pearl Chrome
- Black

PREMIUM

- Brushed Nickel
- Gunmetal Grey
- Brushed Gold
- White

PREMIUM+ SPECIAL ORDER

- Gunmetal Grey
- Bronze
- Polished Gold
- Brushed Champagne/ Rose Gold

FULL HEIGHT SLIDING PARTITION SHOWER SCREENS (concealed track) – POA

- Matt Silver
- Black Lacquered
- White Lacquered

Configurations

- Wall Mounted
- Wall with Fixed Panel
- Ceiling or False Ceiling
- False Ceiling with Lintel (with or without fixed glass)
- Wall-to-Wall
- Glass Wall Integration

10MM PANELS



10MM FRAMELESS SHOWER SCREENS

10mm Toughened Safety Glass

Hardware: Hinges, Patch Fittings, Handles

STANDARD

- Polished Silver
- Matt Silver/Pearl Chrome
- Black

PREMIUM

- Brushed Nickel +5%
- Gunmetal Grey +5%
- Brushed Gold +5%
- White +5%

SPECIAL ORDER

- Rose Gold +5% + \$250 per order
- Bronze +5% + \$250 per order

Hardware: U Channel

STANDARD

- Polished Silver
- Matt Silver/ Pearl Chrome
- Black

PREMIUM

- Brushed Nickel +5%
- Gunmetal Grey +5%
- Brushed Gold +5%
- White +5%

SPECIAL ORDER - POA

- Additional powder coated colours

Toughened Glass: 10mm

STANDARD

- Clear

PREMIUM

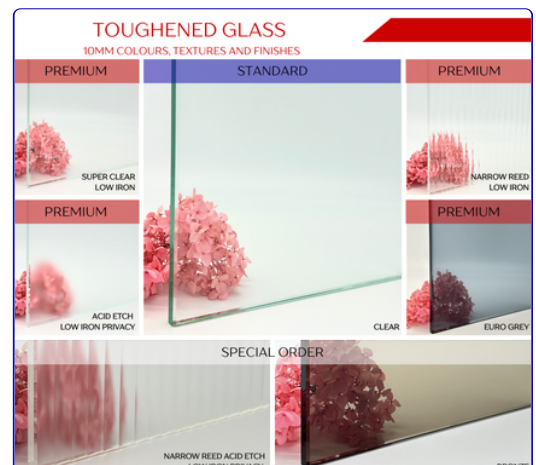
- Super Clear Low Iron +10%
- Acid Etch Low Iron (privacy glass) +15%
- Narrow Reed Low Iron +20%
- Euro Grey +10%

SPECIAL ORDER

- Narrow Reed Acid Etch Low Iron +35%
- Bronze +15%
- Other glass available by request

10mm SHOWER SCREEN NOTES

- Fixings to the wall can either be clips or u-section, clips are standard
- Minimum panel size to have a door hinged off of it: 150mm
- Accessible door



S3 SLEEK

6mm Semi-Frameless Shower Screen

Hardware: 6mm Pivots, Framing, Handles

STANDARD COLOURS

- Polished Silver
- Matt Silver/ Pearl Chrome
- Black

PREMIUM COLOURS

- Brushed Nickel +20%
- Gunmetal Grey +10%
- Brushed Gold +10%
- White +10%

SPECIAL ORDER – POA

- Additional powder coated colours available

Toughened Glass: 6mm

STANDARD

- Clear

PREMIUM

- Satin Lite (textured privacy) +35%
- Acid Etch Low Iron (privacy) +35%

SPECIAL ORDER

- Grey Tint +80%

Heights

STANDARD

- 2m
- 2.1m

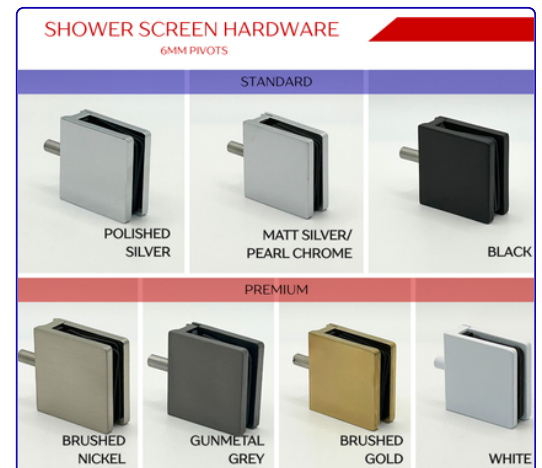
PREMIUM

- Any custom height up to 2.1m

NOTE: Accessible door option available



*A Special Order refers to a non-standard product that is available by request. These items typically require a minimum order quantity, are subject to availability, and may incur additional costs and extended lead or processing times.



S3 CORE

6mm Semi-Frameless Shower Screen

Hardware: Pivots, Framing, Handles

STANDARD

- Polished Silver
- Matt Silver/ Pearl Chrome

Toughened Glass: 6mm

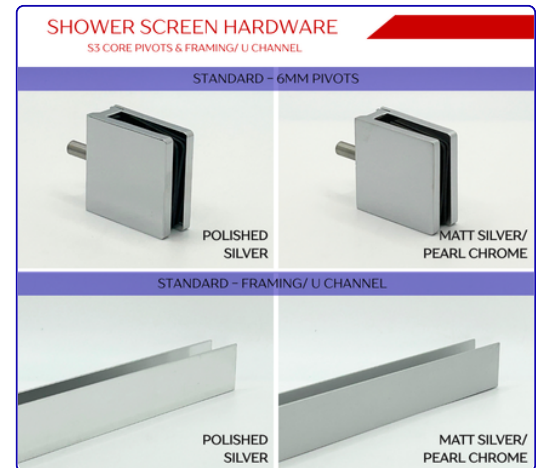
- Clear

Height

- 2m (standard)

Configurations

- Front
- Front and Return
- Accessible door option



*A Special Order refers to a non-standard product that is available by request. These items typically require a minimum order quantity, are subject to availability, and may incur additional costs and extended lead or processing times.

MIRRORS

Micro-Framed and Framed

Frame Colours

STANDARD

- Polished Silver
- Matt Silver
- Black

PREMIUM

- Brushed Nickel +20%
- Gunmetal Grey +10%
- Brushed Gold +10%
- White +10%

SPECIAL ORDER – POA

- Additional powder coated colours available by request

Mirror Colours

STANDARD

- Silver

PREMIUM

- Grey Tint +25%
- Bronze Tint +25%

SPECIAL ORDER – POA

- Gold
- Pink Champagne

Framed and Micro-Framed Mirror: Shapes

STANDARD

- Square
- Rectangle

FRAMED AND MICRO-FRAMED MIRROR NOTES

- Max Size 2m²
- Mirrors by default are not sealed (caulked) to the surrounding walls / tiles
- Framed and Micro-Framed mirrors are to be square or rectangle (ie no out of squares). Surcharge of +\$10 per each side out of square



MIRRORS

Frameless Polished Edge Mirror

Frameless Mirror: Shapes

STANDARD

- Square
- Rectangle

PREMIUM

- Round +\$55
- Oval/ Elipse +\$200
- D End +\$200
- D End Radius Corners +\$200
- Arch +\$200
- Rectangle Radius Corners +\$200
- Pill +\$200

SPECIAL ORDER – POA

- Mirrors with Cut Outs
- Other shapes (please enquire)

Mirror Colours

STANDARD

- Silver

PREMIUM

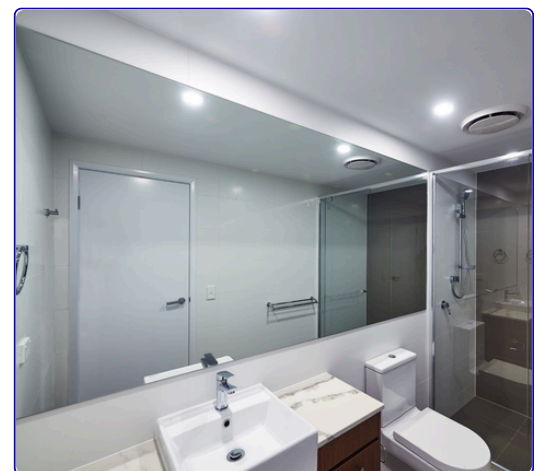
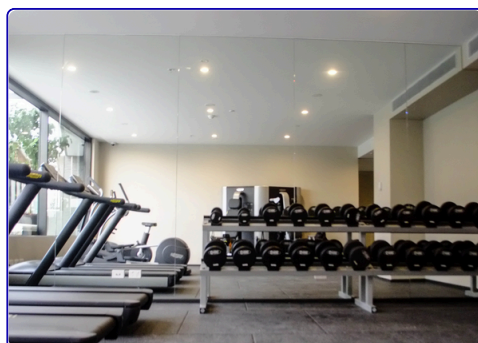
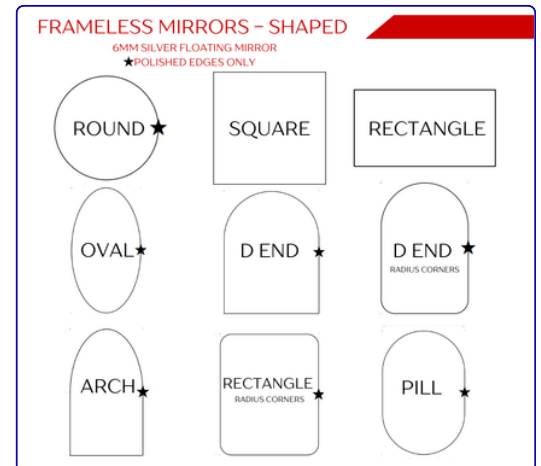
- Grey Tint +25%
- Bronze Tint +25%

SPECIAL ORDER – POA

- Gold
- Pink Champagne

FRAMELESS MIRROR NOTES

- Max Size 2m²
- 6mm Mirror Wall Mirrors Max per mirror is 2.7m²
- Mirrors by default are not sealed (caulked) to the surrounding walls / tiles
- Surcharge of \$10 added per each side out of square
- Bevelling requires additional lead time



*A Special Order refers to a non-standard product that is available by request. These items typically require a minimum order quantity, are subject to availability, and may incur additional costs and extended lead or processing times.

SHAVING CABINETS

Styles and Colours

STANDARD WHITE SHAVING CABINET

Featuring a white laminate exterior and white laminate interior with silver mirror and polished edges, this classic design is perfect for a clean and minimalist look.

COLOURED SHAVING CABINET*

For a fully coordinated look, select this option with both coloured laminate inside and out. The silver mirror and polished edges provide a modern touch.

SHAVING CABINET WITH EXTRA SHELF

This version includes an extra shelf at the bottom for additional storage. It features a sleek silver mirror with polished edges, offering extra functionality without compromising style.

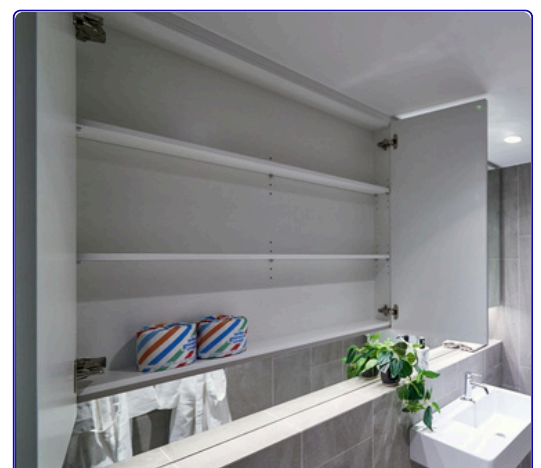
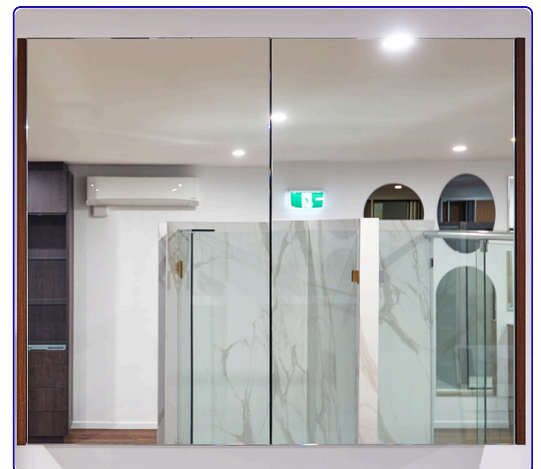
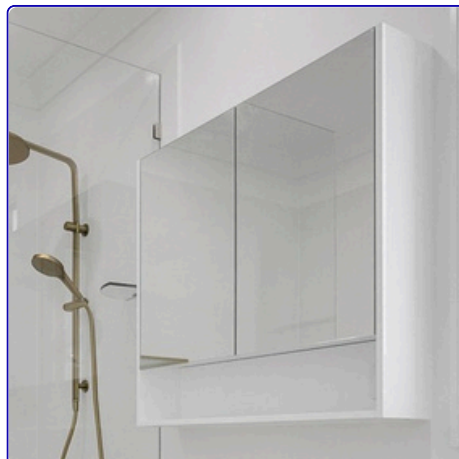
- White Laminate
- Coloured Laminate*

Specifications

- Cabinet Internal Depth: 100mm
 - Can be up to 200mm Deep upon request
- Max Door Width: 600mm per door
- Installation: Wall-hung or Recessed (if pre-prepared)

SHAVING CABINET NOTES

- Coloured shaving cabinet requires extended lead time
- Upgrade to glass shelving inside +\$75 per shelf
- Wall-hung for easy installation, and can also be recessed into the wall when pre-prepared by builders/ during construction
- Optional infill on sides n/a with recessed shaving cabinets
- Available without mirror



*A Special Order refers to a non-standard product that is available by request. These items typically require a minimum order quantity, are subject to availability, and may incur additional costs and extended lead or processing times.

SLIDING WARDROBE DOORS

Frameless

Insert Types: Glass/ Mirror

STANDARD

- Silver

PREMIUM

- Grey Tint Mirror +25%
- Bronze Tint Mirror +35%
- Superwhite +20%

SPECIAL ORDER - POA

- Clear Glass
- Grey Glass
- Bronze Glass
- Satin Lite (textured privacy glass)
- Acid Etch (privacy glass)
- Painted Glass* +100%

Frame and Track Colours

STANDARD

- Polished Silver
- Matt Silver
- Black
- White

Track Types: Frameless

STANDARD

- Standard (EWD3) 83mm deep
- Raised (EWD34) 83mm deep
- Standard with Lip (EWD3A) 83mm deep

PREMIUM

- Triple (EWD14) 125mm deep
- Triple with Lip (EWD14A) 125mm deep

Frame Types

- Micro-Frame with Finger Grip
- Micro-Frame

NB Each door will come with:

1x Finger Grip Micro-Frame side

1x Micro-Frame side



*A Special Order refers to a non-standard product that is available by request. These items typically require a minimum order quantity, are subject to availability, and may incur additional costs and extended lead or processing times.

SLIDING WARDROBE DOORS

Framed and Slimline

Insert Types: Vinyl Gyprock

STANDARD

- Glacier/ White
- Chalk

PREMIUM

- White Ash
- Parchment
- Gull
- White Double Sided Particle Board

SPECIAL ORDER

- [Raw MDF Patterned Doors](#)
- [MDF Colourboard/ Laminate](#)

Insert Type: Glass/ Mirror

STANDARD

- Silver

PREMIUM

- Grey Tint Mirror +25%
- BronzeTint Mirror +35%
- Superwhite +20%

SPECIAL ORDER – POA

- Clear Glass
- Grey Glass
- Bronze Glass
- Satin Lite (textured privacy glass)
- Acid Etch (privacy glass)
- Painted Glass* +100%

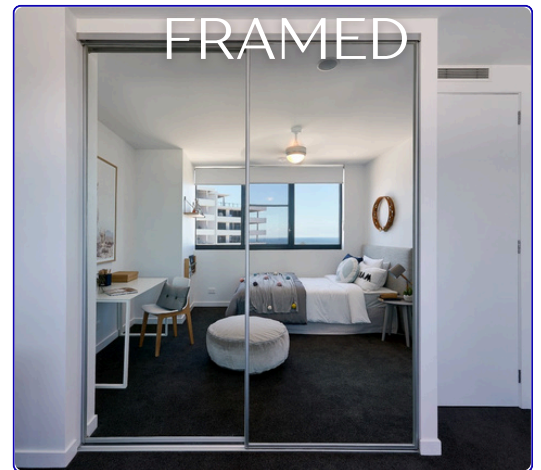
Frame and Track Colours

STANDARD

- Polished Silver
- Matt Silver
- Black
- White

SPECIAL ORDER – Framed

- White Shoji +20%
- Matt Gold +20%
- Almond +20%
- White Birch +20%



*A Special Order refers to a non-standard product that is available by request. These items typically require a minimum order quantity, are subject to availability, and may incur additional costs and extended lead or processing times.

SLIDING WARDROBE DOORS

Framed and Slimline

Track Types: Framed

STANDARD

- Standard (EWD3) 83mm deep
- Raised (EWD34) 83mm deep
- Standard with Lip (EWD3A) 83mm deep

PREMIUM

- Triple (EWD14) 125mm deep
- Triple with Lip (EWD14A) 125mm deep

Track Types: Slimline +10%

STANDARD

- Standard (EWD3) 83mm deep *not slimline

PREMIUM

- Slimline Double Track (EWD23A) 57mm deep
- Slimline Triple Track (EWD43) 83mm deep

SHOJI SECTIONED DOORS: FRAMED +20%

Insert Types

- Glass/ Mirror
- Vinyl Gyprock
- MDF Colourboard/ Laminate

Shoji Style Frame Colours

- Black
- White
- Matt Silver

WARDROBE DOORS NOTES

- Price based on the number of doors required within the width
- If you have an 1800mm opening, double doors may not provide a wide enough opening for your needs, a triple door and track solution would allow wider access.
- Tracks longer than 2700mm, the track will need to be split and joined to accommodate delivery and require professional installation by Civic.
- Our tracks are installed with end caps to ensure no scratching and to provide a clean finish.
- Painted Glass: colour match to:
 - [Australian Colour Standards](#)
 - [Australian Dulux Colours](#)

*A Special Order refers to a non-standard product that is available by request. These items typically require a minimum order quantity, are subject to availability, and may incur additional costs and extended lead or processing times.



CUSTOM WARDROBES

Built In Robes, Walk In Robes, Custom Storage

Finishes

WHITE WARDROBE

Vinyl Gyprock 16mm: WHITEBOARD

- White

COLOURED WARDROBE

Decorative Board – 16 & 18mm

- Polytec
 - 16mm
 - 18mm
- Formica
- Laminex
- Nikpol
 - 16mm
 - 18mm
- Or any supplier – depending on availability

Drawer Towers

STANDARD DRAWER TOWER

Combine shelving and drawers for the best of both worlds.

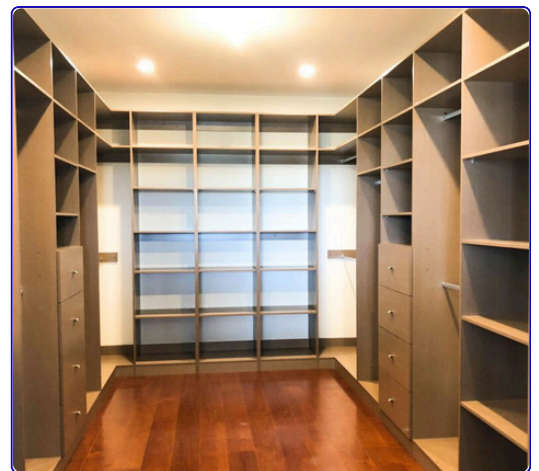
- 4 Drawers Air-Gap (or with Handle)
- 2-3 Adjustable Shelves & Top Shelf
- Flexible design for various storage needs
- Ideal for combining folded items, accessories, and concealed storage

CUSTOM TOWER

Design your tower your way, from a single drawer box to a full-height shoe shelf or a mix of drawers, shelving, and accessories.

Ideal for folded clothes, shoes, accessories, and everyday essentials, our custom towers are built to suit your space and storage needs.

- Mix and match drawers, shelves, and accessories
- Adjustable or fixed shelving options
- Choose from a range of finishes and drawer front styles



*A Special Order refers to a non-standard product that is available by request. These items typically require a minimum order quantity, are subject to availability, and may incur additional costs and extended lead or processing times.

CUSTOM WARDROBES

Built In Robes, Walk In Robes, Custom Storage

Drawer Systems

METAL SIZE DRAWER SYSTEM

- Single wall, sturdy classic
- Certified under German Quality Standards
- Quiet roller runner with load capacity of up to 25kg
- Hettich: MultiTech

Sizes

STOCK ITEM

- 150mm height x 400mm depth
- 118mm height x 400mm depth – Underwear drawer
- 86mm height x 400mm depth – Jewellery drawer
 - Widths: Custom Size/ up to 650mm max width

SPECIAL ORDER

- 214mm height x 400mm length
 - Widths: Custom Size/ up to 650mm max width

SOFT CLOSING DRAWER SYSTEM

- Soft closing system
- Load capacity: 40kg
- Symetra Square: Slim Double Wall Side Drawer System: Furnware

Sizes

PREMIUM

- 167mm height x 400mm deep – White
- Widths: Custom Size/ up to 1000mm max width

SPECIAL ORDER

- All other sizes and colours

Specifications

- Heights: 86mm/ 118mm/ 167mm/ 199mm
- Depths: 270mm/ 350mm/ 400mm/ 450mm/ 500mm/ 550mm
- Widths: Custom Size/ up to 1000mm max width

Finishes

PREMIUM

- White (select size only)

SPECIAL ORDER

- White
- Graphite & White

*A Special Order refers to a non-standard product that is available by request. These items typically require a minimum order quantity, are subject to availability, and may incur additional costs and extended lead or processing times.



CUSTOM WARDROBES

Built In Robes, Walk In Robes, Custom Storage

Drawer Fronts

AIR-GAP DRAWER FRONT

STANDARD

- Designed for style and practicality, these drawer fronts allow for subtle ventilation while maintaining a clean aesthetic.
- Standard Air-Gap drawer fronts are melamine with a 30mm finger pull gap

DRAWER WITH HANDLE

- A classic and practical choice, offering a variety of handle options to suit your style.

Customisable handle choices to match your decor

Finishes

STANDARD

- Whiteboard

PREMIUM

- [Polytec](#)
- [Laminex](#)
- [Formica](#)
- [Nikpol](#)
- Or any supplier – depending on availability

Handles

STANDARD HANDLES – \$10–\$15 per handle

A practical and stylish option, our standard Nover Handles offer reliable functionality with a range of classic designs.

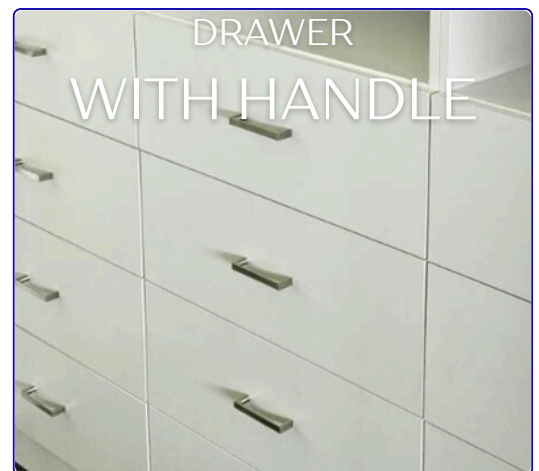
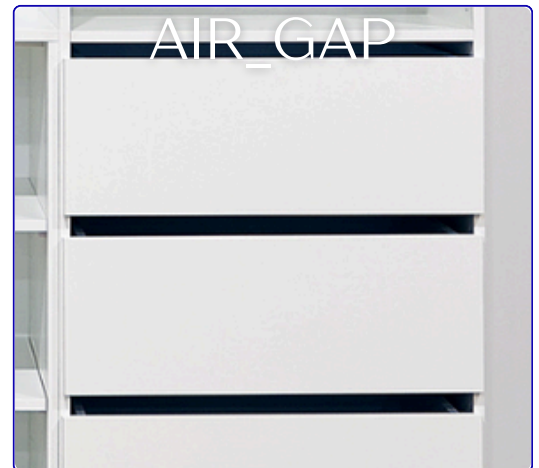
- Available in a variety of popular styles and finishes
- Built for everyday use with durable construction
- Versatile and timeless to suit any space

PREMIUM HANDLES – POA

Elevate your cabinetry with premium Momo Handles that add sophistication, texture, and a designer finish.

- Distinctive styles and refined finishes for a custom look
- Enhances visual appeal and tactile experience
- Ideal for statement pieces and feature wardrobes

*A Special Order refers to a non-standard product that is available by request. These items typically require a minimum order quantity, are subject to availability, and may incur additional costs and extended lead or processing times.



CUSTOM WARDROBES

Built In Robes, Walk In Robes, Custom Storage

Drawer Fronts

SHARK NOSE FINGER PULL

- Handle-free for a streamlined look
- Easy finger pull design for smooth operation
- Shark nose or Bevelled finger pull

Finishes

STANDARD

- Whiteboard

PREMIUM

- [Polytec](#)
- [Laminex](#)
- [Formica](#)
- [Nikpol](#)
- Or any supplier – depending on availability

VINYL WRAP WITH INBUILT FINGER GRIP

Enjoy a sleek and seamless look with our Vinyl Wrap Drawer Fronts. The inbuilt finger grip provides effortless opening without the need for handles.

- Seamless, modern design
- Easy-to-use inbuilt finger grip

Finishes

- [Polytec](#)

SCOLLOPED FRONT

Finishes

- White

Sizes

- 507mm
- 607mm

PATTERNED MDF DRAWER FRONT

Make a statement with textured drawer fronts that bring depth, style, and individuality to your wardrobe.

- Various patterns available – [view the options here](#)
- Perfect for feature cabinetry or a custom finish

Available in:

- [Polytec Thermolaminated product range](#)

*A Special Order refers to a non-standard product that is available by request. These items typically require a minimum order quantity, are subject to availability, and may incur additional costs and extended lead or processing times.



CUSTOM WARDROBES

Built In Robes, Walk In Robes, Custom Storage

Shelving

FIXED SHELF

Strong and secure shelving for reliable storage of clothes, accessories, and other essentials.

- Sturdy construction for long-term use
- Ideal for heavy items and bulk storage

Specifications

- Max Span without joining: 2700mm
- Max Span between supports: 1200mm
- Standard Depth: 440mm
 - Available Depths: 200-600mm

TOP SHELF

Optimise vertical space with a high-positioned shelf, ideal for infrequently used items.

- Great for storing luggage, boxes, or seasonal accessories
- Makes the most of full wardrobe height
- Neatly conceals overhead storage
- Fixed Shelf with Hanging Rail Underneath

HAT SHELF

A dedicated space for storing and protecting hats, bags and accessories, keeping them in perfect shape.

- Prevents hats from getting crushed or misshapen
- Positioned above hanging space for easy access
- Designed for easy access and visibility
- Can be customised to suit your wardrobe layout
- Fixed Shelf

SHELF WITH FRONT CLEAT

Reinforced shelving with a front cleat for added strength and a clean, built-in finish.

Specifications

- Max Span without joining: 2700mm
- Standard Depth: 440mm
 - Available Depths: 200-600mm

Types

- Fixed Shelf with Recessed Front Cleat
 - Max Span between supports: 1600mm
- Fixed Shelf with Double Front Cleat
 - Max Span between supports: 1900mm



CUSTOM WARDROBES

Built In Robes, Walk In Robes, Custom Storage

Shelving

SHELF WITH SUPPORT

Stylish and functional shelves supported by vertical posts, gables, or shark fins for additional strength.

- Creates an open, airy feel in your wardrobe
- Visually separates sections for design impact
- Ideal for display items or curated collections

Support Types: 1201mm+

- Post (Full height, floor to underside of top shelf)
- Post with Back Support
- Full Gable (Full height, Depth 240mm)
- Half Gable (Depth 240mm, Length 1200mm, Max Capacity 100kg/m)
- Shark Fin Support (Depth 240mm, Max Capacity 50kg/m)
- Front Cleat

SHOE SHELF WITH LIP

Angled adjustable shelving designed specifically for shoes, with a front lip to keep pairs in place.

- Neatly displays footwear for easy selection
- Customisable spacing, suitable for all shoe types, from flats to boots

ADJUSTABLE SHELF

Flexible shelving that adapts to your changing storage needs.

- Easily reposition to suit different item heights
- Great for growing kids, seasonal items, or evolving layouts

GLASS SHELF +\$75 per shelf

A premium shelf option offering style and visibility, ideal for accessories and display items.

- Durable toughened glass construction
- Enhances visibility of contents like jewellery, perfumes, or decor

SHELVING NOTES

- Shelf sheet length is 2700mm max. Spans larger than 2700mm will have a shelf join.
- Shelf joins must have a full height gable or drawer unit below join for support
 - A drawer unit, adjustable shelf unit can act as the gable/ support.



CUSTOM WARDROBES

Built In Robes, Walk In Robes, Custom Storage

Hanging Solutions

SINGLE HANGING RAIL

A classic solution for hanging long garments like dresses, coats, and trousers.

- Sturdy and durable for everyday use
- Maximises vertical space in your wardrobe
- Sleek design to match any interior

DOUBLE HANGING RAIL

Maximise vertical space with two levels of hanging rails.

- Perfect for shirts, pants, and shorter garments
- Doubles your hanging capacity
- Space-efficient and organised

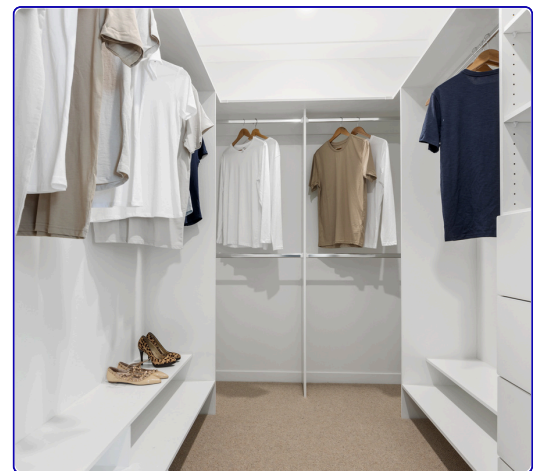
Single and Double Hanging Rail Finishes

STANDARD

- Polished Silver
- White

PREMIUM

- Black +200%
- Gold +400%



PULL OUT/DOWN HANGING RAIL - \$458

Lowers clothing to an accessible height, perfect for maximising high wardrobe spaces.

- Effortless soft closing and opening pull-down mechanism for convenience
- Aluminum extrusion rod can be easily cut down equally from each side to the desired width. The rest of the material is steel.

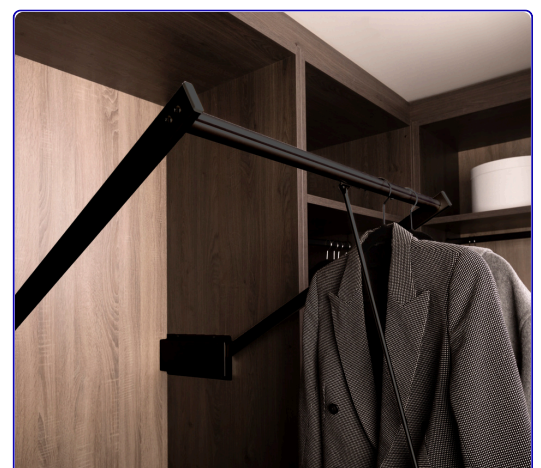
Finishes

- Matt Silver - W900mm
- Matt Black - W900mm

Specifications

- Width: 900mm
- Depth: 320mm
- Height: 800mm
- 12kg capacity

*A Special Order refers to a non-standard product that is available by request. These items typically require a minimum order quantity, are subject to availability, and may incur additional costs and extended lead or processing times.



CUSTOM WARDROBES

Built In Robes, Walk In Robes, Custom Storage

Accessories*

JEWELLERY TRAY INSERT \$116

Specifications

- Luxurious soft fabric felt lining to prevent scratches
- 15 Organised compartments for rings, bracelets, and 2 piece adjustable sides
- White/Apricot
- Height: 65mm
- Length: 375mm
- Width: 375-600mm



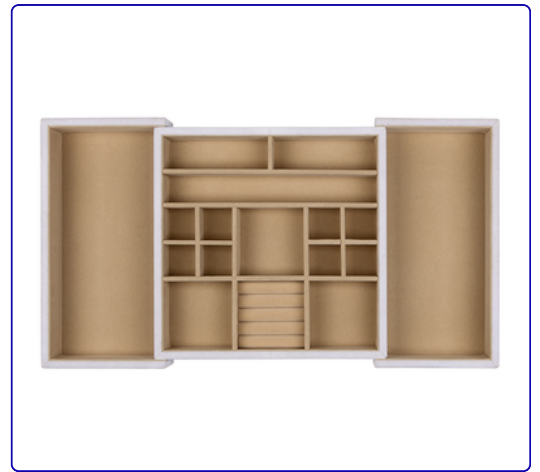
DELUXE SLIDING BELT RACK \$79

Colour Options

- Matt Silver
- Matt Black

Specifications

- 7 hooks for organised storage
- Smooth pull-out mechanism for convenience
- Right/ Left hand mounting
- Width: 55mm
- Depth: 350mm
- Height: 88mm



DELUXE SLIDING TIE RACK \$79

Colour Options

- Polished Silver
- Matt Silver
- Matt Black

Specifications

- 8 Double hooks
- Right/ Left hand mounting
- Width: 59mm
- Depth: 350mm
- Height: 78mm



*A Special Order refers to a non-standard product that is available by request. These items typically require a minimum order quantity, are subject to availability, and may incur additional costs and extended lead or processing times.

CUSTOM WARDROBES

Built In Robes, Walk In Robes, Custom Storage

Accessories*

SOFT CLOSE PANTS OR TROUSER RACK

Helps to keep trousers and pants in shape with a smooth, soft-close mechanism.

- Prevents wrinkles and creases
- Soft-close function for quiet operation
- Multiple hanging bars for ample storage

Options

- Matt Silver
 - 7, or 10, or 17 Pants Hanging Rails,
 - 8 Trousers Hanging Rails
- Matt Black
 - 7, or 10 Pants Hanging Rails

Specifications

Pants Racks: 7/ 10/ 17 Rails

- Module Width: 450/ 600/ 900mm
- Width: 412–866mm
- Depth : 350mm
- Height: 63mm

Trousers Rack: 8 Rails

- Width: 405mm
- Depth: 400mm
- Height: 90mm

Price

- 450mm Matt Silver/ Matt Black \$240
- 600mm Matt Silver/ Matt Black \$272
- 900mm Matt Silver \$301

Non-soft close Pants Rack also available by special order.

- Pants Rack (not soft close) 400mm Matt Silver \$116

ACCESSORIES NOTES

- Additional Nikpol accessories available by special order
- Complex installation is \$80/hr (min \$350)

*A Special Order refers to a non-standard product that is available by request. These items typically require a minimum order quantity, are subject to availability, and may incur additional costs and extended lead or processing times.



SPLASHBACKS

6mm Toughened Heat Resistance Safety Glass

MIRRORMAX SPLASHBACK

STANDARD

- Grey MirrorMaax
- Bronze MirrorMax
- Black MirrorMax

SPECIAL ORDER

- Gold MirrorMax
- Silver MirrorMax

PAINTED SPLASHBACK INCL METALLIC PAINT

- Custom-coloured to match:
 - Australian Colour Standards
 - Australian Dulux Colours
- Metallic Paint + extra \$/m²
 - Silver
 - Pearl
 - Copper
 - Mini Sparkle



TEXTURED & PAINTED SPLASHBACK

Glass Textures

- Satin Lite +35%
- Acid Etch/ Matt Finish +35%
- Narrow Reed (Fluted) +100%

Paint Colours

- As above

PRINTED SPLASHBACK – APPROX \$1100-1250/M²

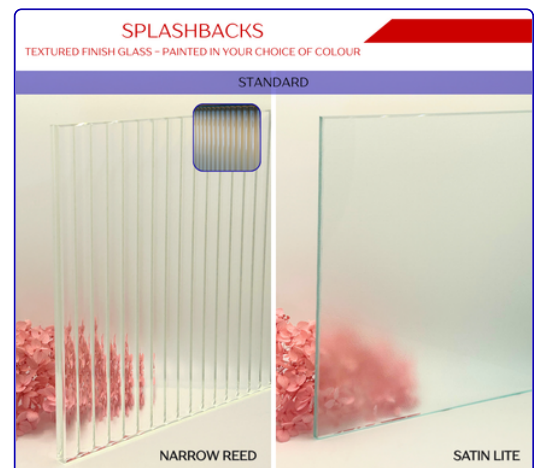
- Custom Designs, High Res Images, Photos

SPLASHBACK NOTES

- Edgework: Polished edges included unless otherwise specified.
- Cutouts extra
- Maximum Panel Sizes: TBC

Configurations

- Straight: Rectangle/ Square
- T Shaped: 1 piece or 2
- L Shaped
- U Shaped/ 3 sides



*A Special Order refers to a non-standard product that is available by request. These items typically require a minimum order quantity, are subject to availability, and may incur additional costs and extended lead or processing times.

